







Bed Frame Assembly Instruction Guide



BARKER AND
STONEHOUSE



Supplied Fittings

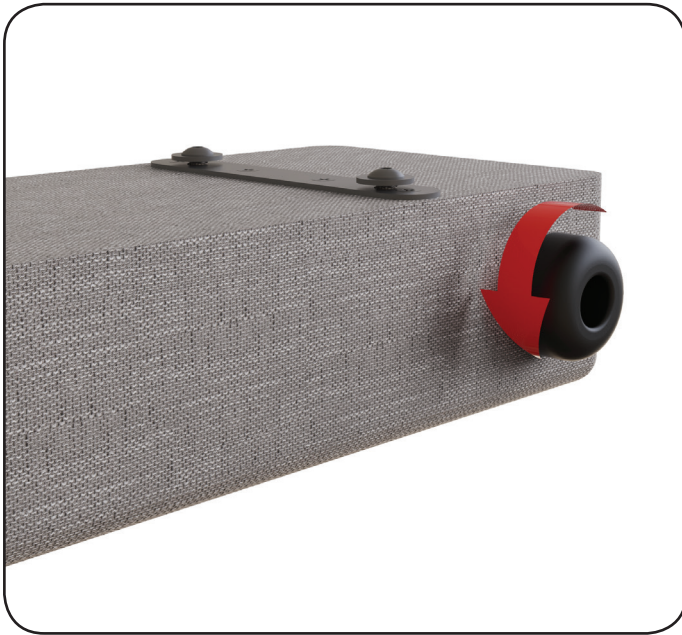
A	B	C	D	E	F
 <p>x 1</p>	 <p>x 9</p>	 <p>x 4</p>	 <p>x 4</p>	 <p>x 5</p>	 <p>x 6</p>

01WM-01E 2019-05-19

Please check you have the correct fittings and read through before commencing with assembly

Please move to step 4 if you aren't using the legs

Step 1



Remove small plastic foot by unscrewing

Step 2



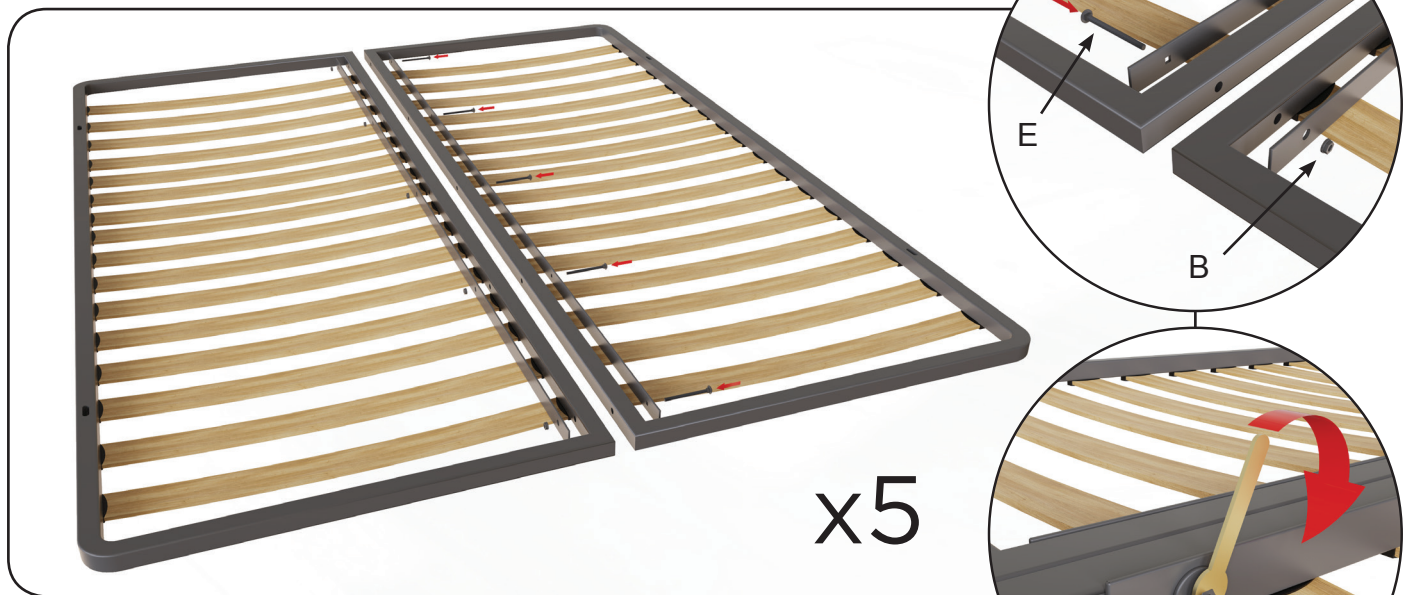
Screw in optional leg, positioning the screw hole on the inside. Do not over tighten

Step 3



Use the supplied screw to secure the leg in place, stopping it from rotating out of position (This step doesn't apply to cylindrical legs)

Step 4



Place the 2 frames together and put the two flat bars on each side. Slot bolt (E) through, starting with the flat bar that has square holes. Use a flanged nut (B) and tighten up using the spanner provided.

Once completed, place the metal frame to one side.

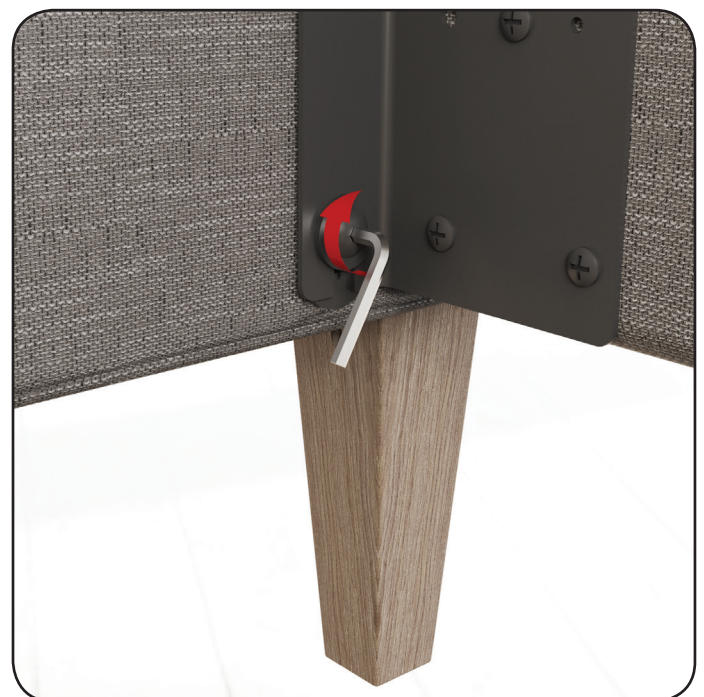
Step 5



Slot the side rail onto the bolts on the headboard.

Quick tip: It's easier to fit the side rails at a slight angle

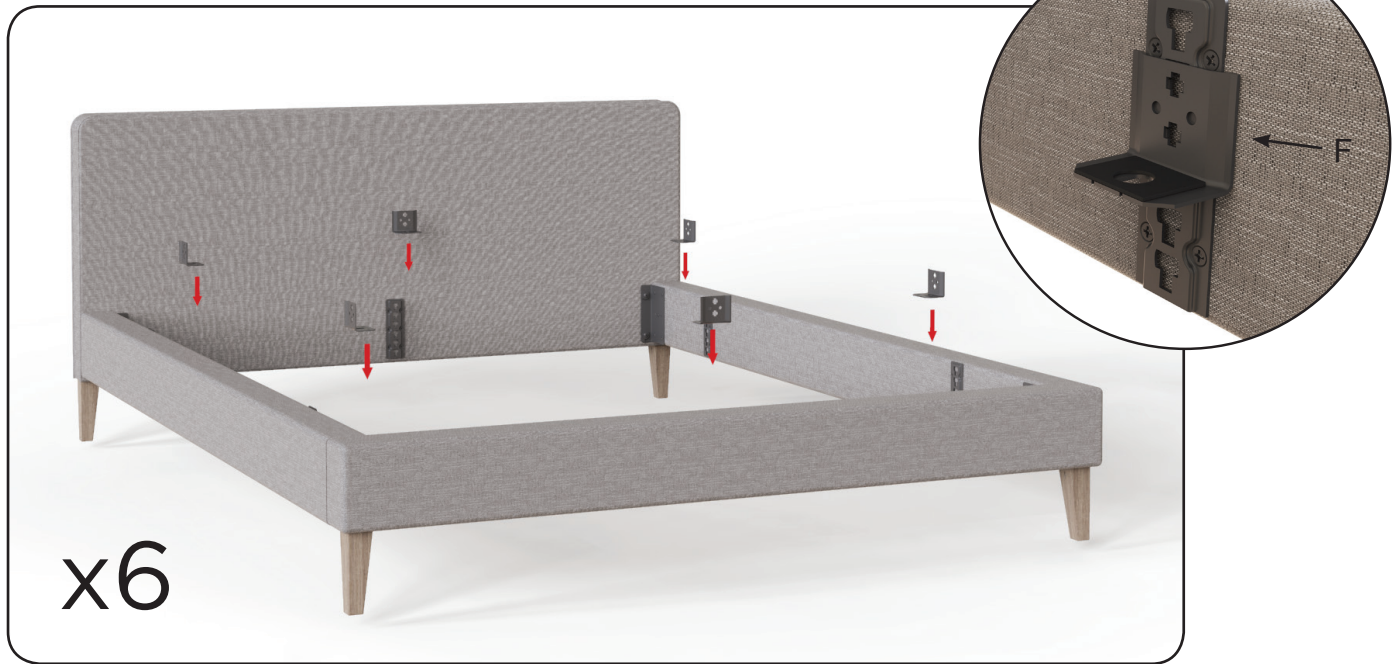
Step 6



Use the allen key provided (A) to tighten the bolts onto the brackets

Repeat steps 5 & 6 for both sides to attach the headboard and footend to the side rails

Step 7



Slot the frame brackets (F) onto the side rails, footend and headboard in the desired position. Ensure all brackets are set at the same height level

Step 8



Place metal frame onto the brackets and secure with bolt (D), washer (C) and flanged nut (B) as shown. Repeat for the 4 brackets on the side rails. (The brackets on the headboard and footend do not need bolting)

**Your bed is now fully assembled.
Please do not use without a mattress and periodically
check that all fixings are tightened correctly**